



CyberView X5

User's Manual

FEDERAL COMMUNICATIONS COMMISSION (FCC) STATEMENT

This Equipment has been tested and found to comply with the limits for a class B digital device, pursuant to Part 15 of the FCC rules. These limits are designed to provide reasonable protection against harmful interference in a residential installation. This equipment generates uses and can radiate radio frequency energy and, if not installed and used in accordance with the instructions, may cause harmful interference to radio communications. However, there is no guarantee that interference will not occur in a particular installation. If this equipment does cause harmful interference to radio or television reception, which can be determined by turning the equipment off and on, the user is encouraged to try to correct the interference by one or more of the following measures:

- Re-orient or relocate the receiving antenna.
- Increase the separation between the equipment and receiver.
- Connect the equipment into an outlet on a circuit different from which the receiver is connected to.
- Consult the dealer or an experienced radio/TV technician for help.

Warning :

Use only shielded signal cables to connect I/O devices to this equipment.

You are cautioned that changes or modifications not expressly approved by the party responsible for compliance could void your authority to operate the equipment.

TABLE OF CONTENTS

Getting Started	4
Quick Installation Guide (QIG)	7
Installing Software and Driver	8
Installing Hardware	9
Loading 120 Films into the Holder	10
Loading 120 Film Holder into the Scanner	11
Loading 135 Film into the Holder	12
Loading 135 Mounted Slides into the Holder	12
Loading 135 Film and Slide Holder into Scanner	12
Additional Features	
How to Scan Film and Slides	
STEP 1 - Acquire Driver	13
STEP 2- Select Film Type	13
STEP 3 - Optional Prescan	14
STEP 4 - Set Scan Settings	16
STEP 5 - Set Scan Preferences	19
STEP 6 - Scan	19
STEP 7 - Exit	20
User Interface	20
I Main Window Area	20
II Preview Window Area	23
Image Adjustment	30
III Active Frame Setting Area	31
Technical Support	

GETTING STARTED

Check the package content before getting started.

For Quick Installation please refer to Quick Installation Guide. (Ref. Pg. 11)

Important! Save the original box, receipt and packing material for future shipping needs.

Package Contents

- Film Scanner
- Medium format film holder for one or two frames (6 x 4.5 cm, 6 x 6 cm), one frame (6 x 7 cm, 6 x 8 cm, 6 x 9 cm, 6 x 12 cm)
- 135 film holder.
- 135 slide holder.
- Power Adapter

Warning! Using any other power adapter may severely damage the scanner and will void the product warranty.

- USB 2.0 Cable.

GENERAL GUIDANCE:

- Only use the supplied USB-Cable. Connect the computer to the scanner directly using the USB 2.0 cable.
- **For systems using USB 3.0 (USB-C and USB mini port) a Hub may be required please see [Connectivity issues with my new scanner](#)**
- **If your situation requires a longer USB cable, use only cables 6ft or less in length, do not use a cable extender**
Also for best connectivity on Desktop computers use only the rear USB ports
- If there are any other devices (multifunction devices, i.e. printers, scanners, web- cam) connected to the computer through USB you may need to disconnect them, this does not apply to Wi-Fi connected devices
- A minimum of 1 GB RAM (Windows/Mac) is required, 2GB or more highly recommended.

Operating Ambient Temperature Range
50° to 104°F (10° to 40°C)

Note: Do not turn on the scanner unless it is within this range. If the scanner has been stored or transported outside of this range, allow it to return to within this range before turning it on.

Operating Ambient Humidity Range 15% to 76% relative humidity (non-condensing)

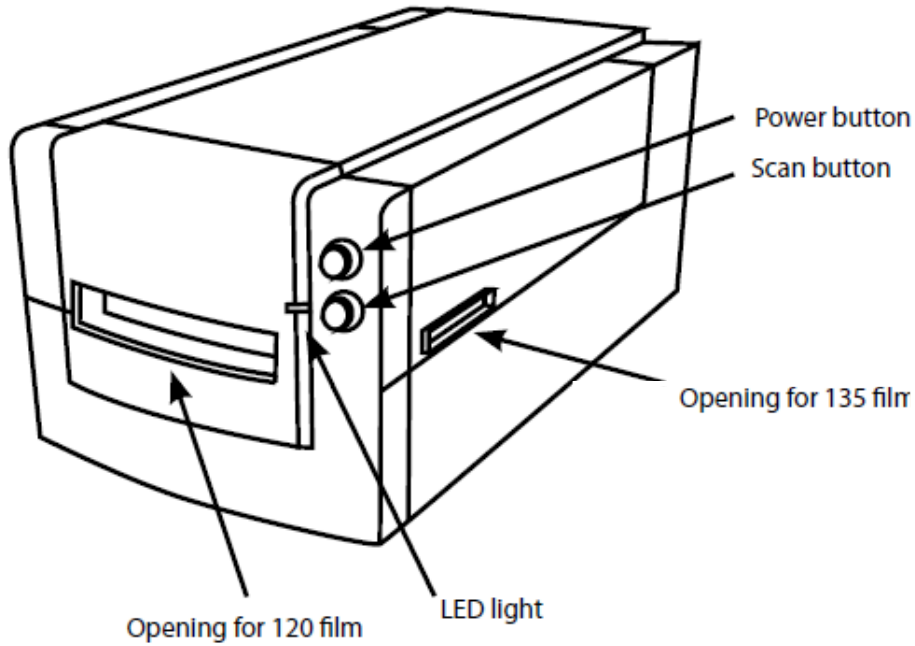
Note: If the scanner is stored or to be transported in cold temperature and then brought into a warm / humid environment condensation may occur.

WARRANTY INFORMATION NOTICE

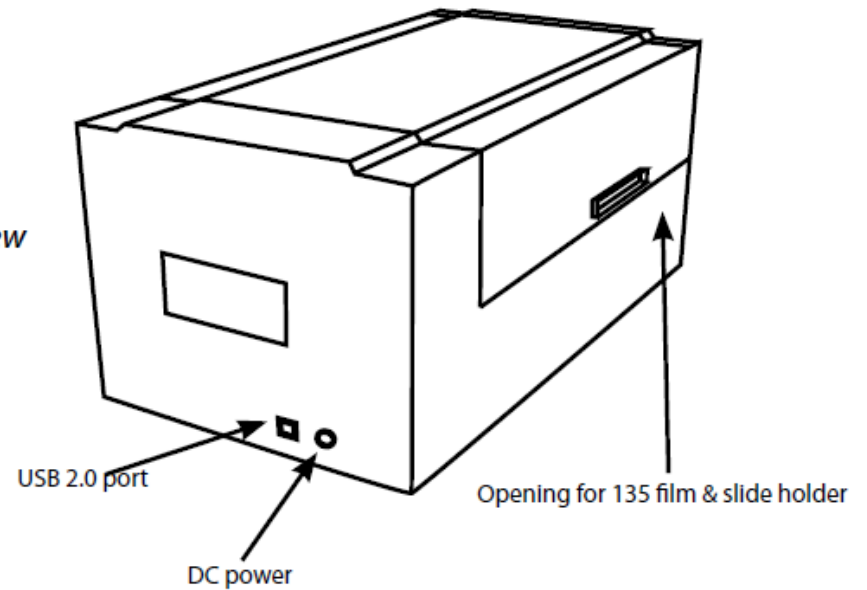
Pacific Image warrants this product to be free from defects of material and workmanship for 1 year from the date of purchase

QUICK INSTALLATION GUIDE

Scanner - front view



Scanner - rear view



QUICK INSTALLATION GUIDE.....

INSTALLING SOFTWARE AND DRIVER

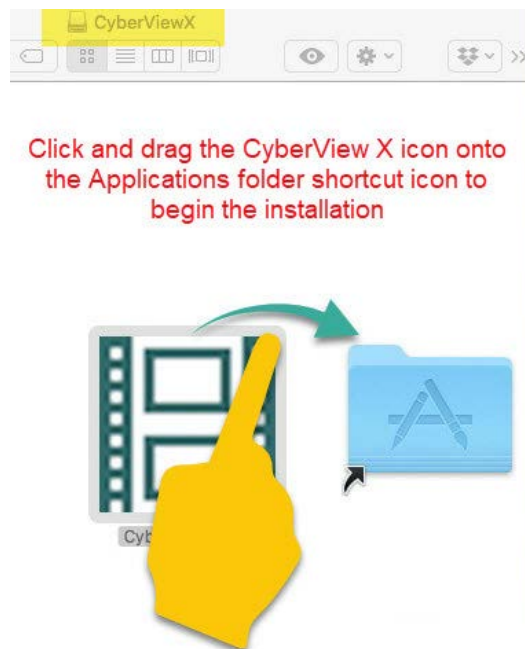
Installing Scanner Driver

NOTE: Make sure the scanner is NOT connected to the computer during the CyberView X driver installation.

Download the CyberView X scanning software from the website [Download Drivers Click Here](#)

WINDOWS – Open the download location Double click the "CyberView" icon to open the zipped file
Click on the CyberView X_Windows installer to begin the installation, follow the onscreen prompts

MAC – Download the driver from the above link, then click on the CyberViewX_Mac file in the downloads folder
this will create a CyberView removable drive icon on the desktop, open the CyberView drive and drag the CyberView icon into the Applications folder beside it to install



QUICK INSTALLATION GUIDE.....

NOTE: Apple systems may display a warning that the software was from unidentified developer because it was not downloaded from the Apple Store, once you run the installer, if you see this warning, next click on the Apple icon – System Preferences – Security & Privacy – Look for the message CyberView attempted to run, Select Open Anyways

Please Note: When installing your new scanner onto a Windows system that already has another **USB** Scanning device **PHYSICALLY CONNECTED**

EXAMPLE: Flatbed scanner or All-in-one Scan/Copier/Printer device connected to a USB port, it may be necessary to power off or if there is no on/off switch disconnect the other scanner from the USB port for the Film scanner to work properly, this does not apply if the device connect via Wi-Fi

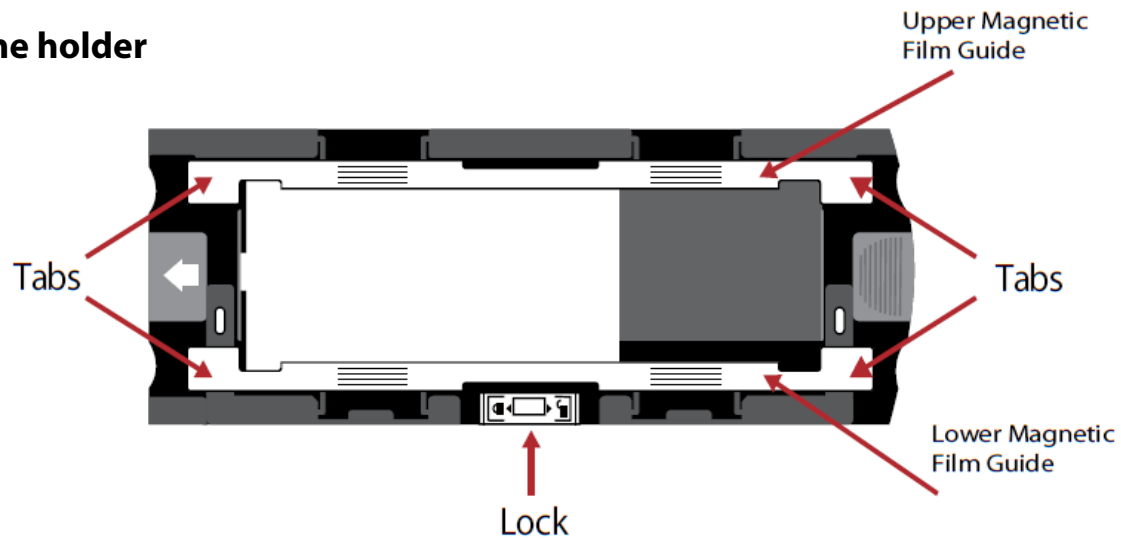
Installing Hardware a. Connect the slide scanner to a power source.

1. Locate the power switch on the front of the scanner. Make sure the scanner is **TURNED OFF**.
2. Plug the AC adapter into an AC power source **FIRST** before plugging it into the scanner.
3. Attach the USB cable to the computer using the standard USB adapter end. Attach the U shaped USB adapter end of the cable to back panel of the scanner.

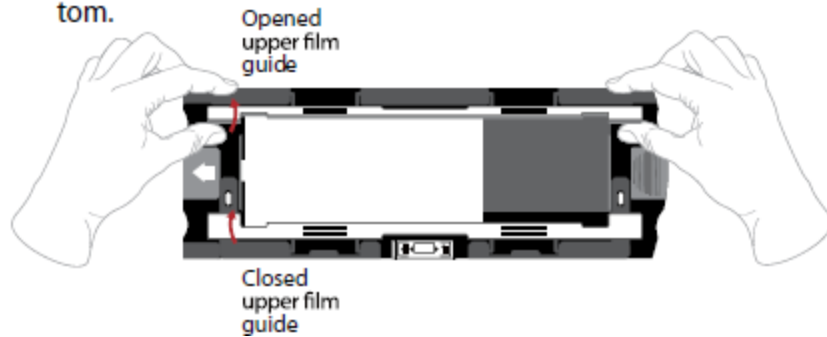
For instructions on loading film into holders see p. 11.

If you are familiar with loading film into film holders skip to p. 18.

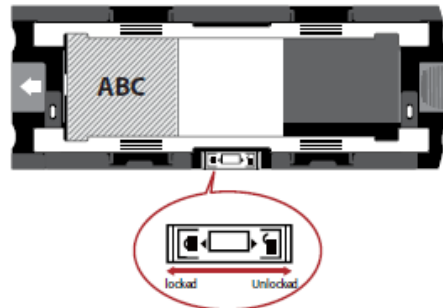
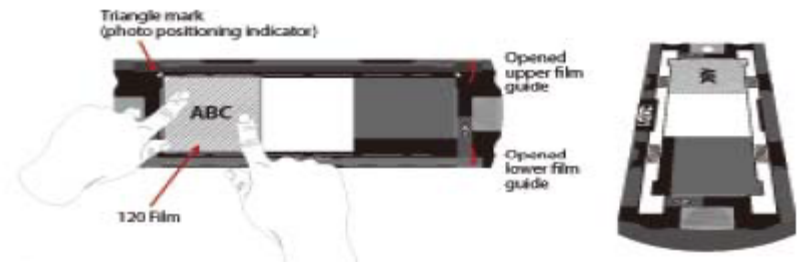
Loading 120 film into the holder



1. As illustrated above, turn the holder with the embossed arrow facing towards the left, so that the lock on the holder is at the bottom.

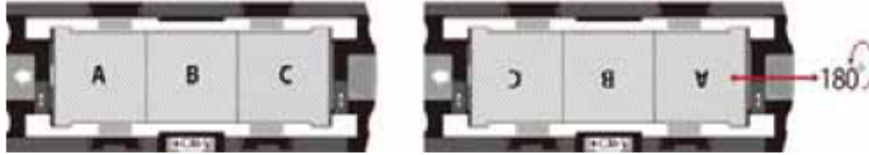


2. Open the two magnetic film holder guides on the sides of the holder by pulling on the tabs of the guides upwards.



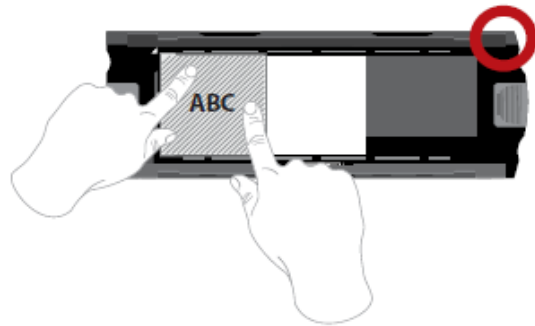
Loading 120 film into the holder...continued

3. To scan a 3rd frame in the strip you will need to remove the strip and rotate it 180 degrees so the writing on the edges is now inverted ɹɹV

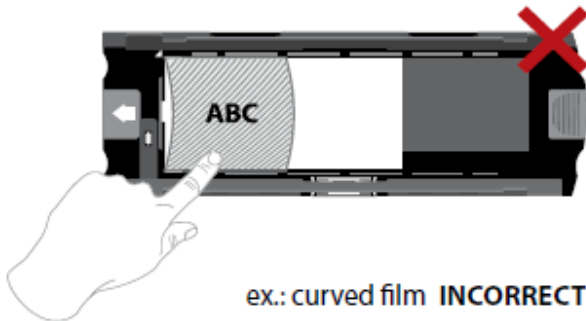


4. Orient the film as illustrated the text on the film edges will read ABC. Align the film with the triangle mark in the upper left corner. Close the upper film guide first.

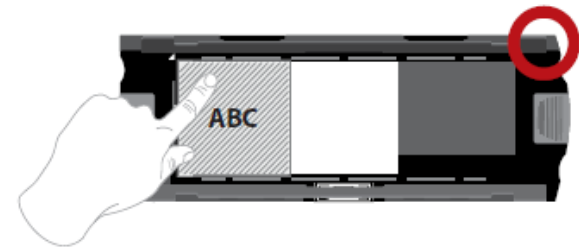
NOTE: Make sure that the film is as flat as possible between the film guide holders (see below).



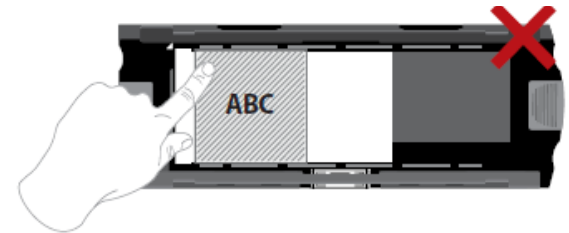
ex.: flattened film **CORRECT**



ex.: curved film **INCORRECT**



ex.: correctly positioned film, lower left corner at the triangle mark



ex.: incorrectly positioned film, not aligned with triangle mark

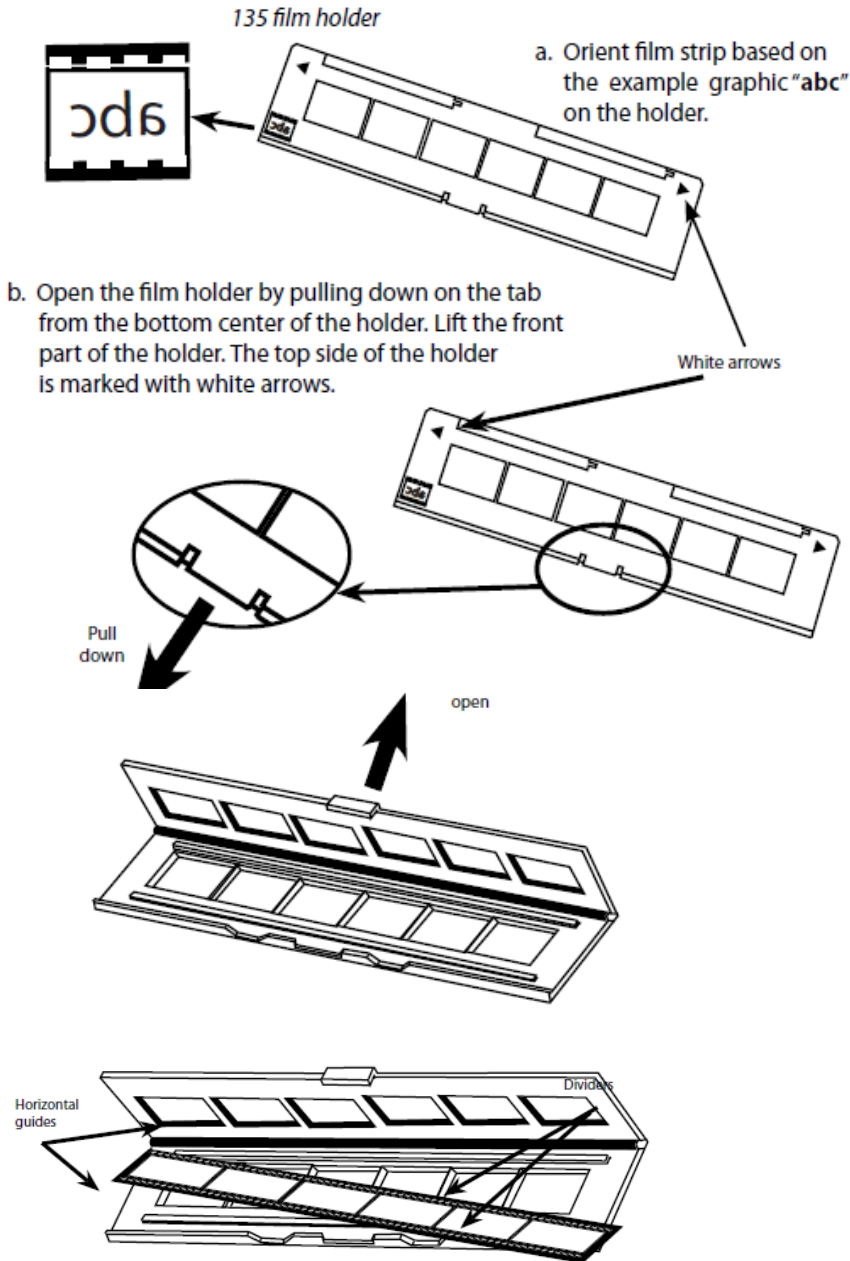
Loading 120 film holder into scanner

- Insert the holder into the front of the scanner, pushing it in as far as it will go.
- To release the holder, gently pull it out.



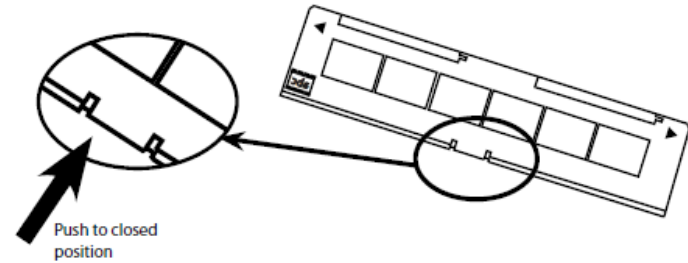
Note: Orientation of scanner in the diagrams is from the front of the unit. Take note of the curved edge of the 120 film holder also facing towards the front of the scanner for correct orientation when loading the scanner

Loading 135 film into the holder



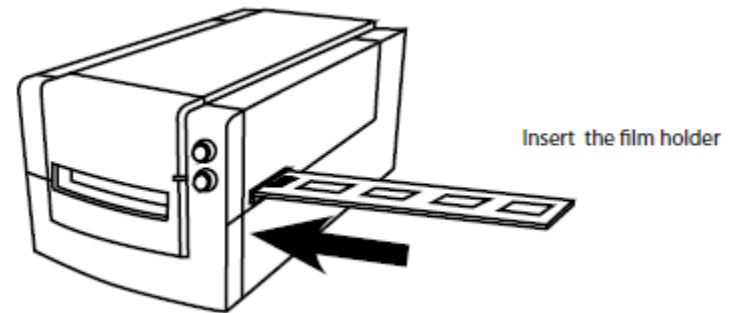
c: Insert the orientated film negative into the holder between the horizontal guides. Carefully line up the dividers on the film negative with the dividers on the holder.

d. Close the holder and push the tab to the closed position



e: Insert the film holder into the scanner from the left or right side into the small opening. Push the holder inside until you feel it hit a stop, then scan. After the scan is done, push the holder farther into the scanner until it hits another stop, and scan again. Repeat until the end of the holder.

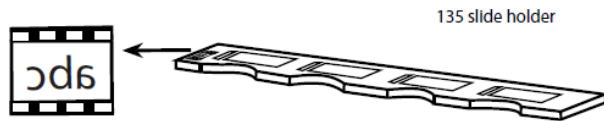
Make sure that the orientation of white arrows on the holder correspond with the triangle mark on the scanner



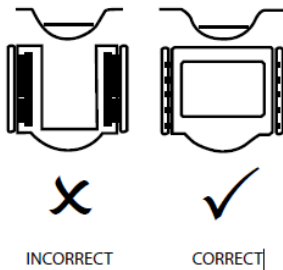
Loading 35mm mounted slides into the holder

1. Push the holder inside until you feel it hit a stop, then scan. After the scan is done, push the holder farther into the scanner until it hits another stop, and scan again. Repeat until the end of the holder.

Make sure that the orientation of arrows on the holder correspond with the triangle (arrow) on the scanner.



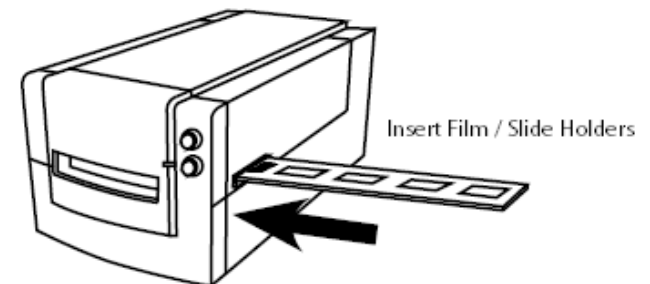
- a. Orient slides based on the example graphic "abc" on the holder.
- b. Insert mounted slides into the holder.



Loading 135 film and slide holder into the scanner

Insert the film holder into the scanner from the left or right side into the small opening. Push the holder inside until you feel it hit a stop, then scan. After the scan is done, push the holder farther into the scanner until it hits another stop, and scan again. Repeat until the end of the holder.

Make sure that the orientation of white arrows on the holder correspond with the triangle mark on the scanner.



2. Set Scan settings and preferences See Page 13

HOW TO SCAN

STEP 1 – Powering on the scanner

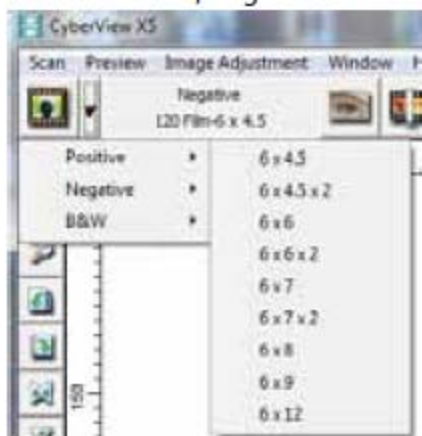
Status LED	Scanner Status
Power on Cycle	Unit will take approx. 40-50 sec. to calibrate. The power LED will be solid blue (not blinking) to indicate that the scanner is ready to use.
LED Status	Flashing indicates the scanner is busy, do not insert/remove film holders
Flashes several times, then a pause, then flashes again	Scanner is malfunctioning. Turn the unit off, close the software, power on the scanner, wait for calibration, then re-open CyberView.

STEP 2 – Select film type

a. Open the CyberView scanning interface.



b. Select the film type to be scanned - Positive, Negative or B&W (Black and White)



c. Once you have selected a film type you will have the option to select the frame sizes for the various 120 format films, after you have inserted the film holder into the unit.

NOTE: The 135 film will be auto-detected, a frame selection is not necessary

HOW TO SCAN.....continued

STEP 3 – Optional Prescan

Pre-Scanning should be used to manually adjust color/edit settings before doing a final scan.

1. In the CyberView interface click on the “Prescan” menu bar icon. The scanner will initialize the prescanning process.



2. Once the prescan is complete, the image will appear in the CyberView interface:

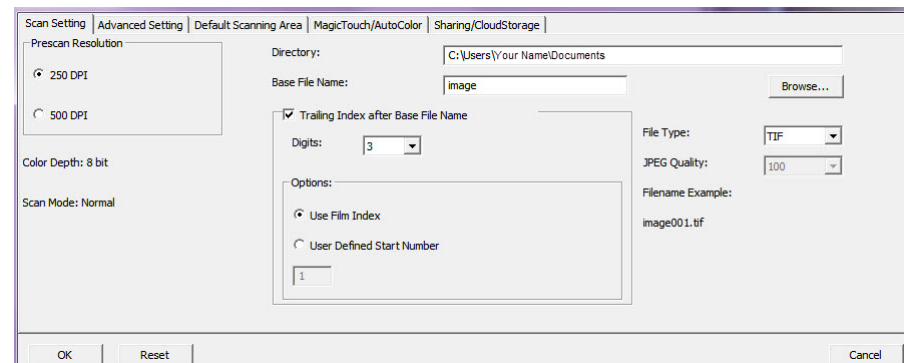


3. When the image appears on the screen, select the “Final scan icon” to scan the file into a folder on the hard drive.

3a. Editing of the prescanned image before saving can also be done by clicking on the “Image Adjustment” icon, (for more see “Advanced scanning options” Page 23).

STEP 4 – Set Scan Settings

After clicking on the “Scan” from the menu, then click on Preference select the film type “Scan setting” setup dialog box will appear:



HOW TO SCAN.....continued

Set Scan Settings (Continued)

a. Resolution

The default scanning resolution is 1000dpi, additional resolution options are listed below.

Notice: Higher scanning resolutions result in greater scanning time and hard disk space requirements.

b. Color Depth

Choose between 8 and 16 bit. A higher color depth setting will result in a larger range of colors in the final scanned image.

c. The Film Scanner color depth is 48 bit true color

The scanning software has the capability of selecting 8 bit color mode or 16 bit color mode when scanning, This will produce 24 or 48 bit color images, 8 bits or 16 bits per Red, Green and Blue color channels

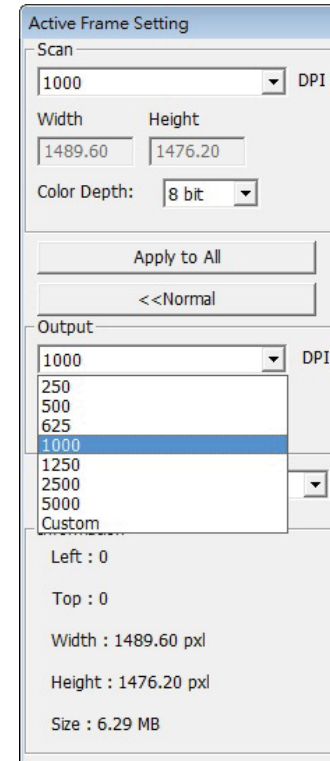
Example:

8 bit mode = 8 Red, 8 Green, and 8 Blue for a total of 24 bit color

16 bit mode = 16 Red, 16 Green, and 16 Blue for a total of 48 bit color

Default Scanning Resolution	Color Depth per RGB channel	Color Mode (24-bit/48-bit)	Film Size (mm)	Approx. File Size*
1000dpi	8 bit	24-bit	35	3.93 MB
1000dpi	8 bit	24-bit	60 x 45	11.97 MB
1000dpi	8 bit	24-bit	60 x 60	15.96 MB
1000dpi	8 bit	24-bit	60 x 70	18.63 MB
1000dpi	8 bit	24-bit	60 x 90	23.94 MB
1000dpi	8 bit	24-bit	60 x 120	31.92 MB
1000dpi	16 bit	48-bit	35	7.87 MB
1000dpi	16 bit	48-bit	60 x 45	23.95 MB
1000dpi	16 bit	48-bit	60 x 60	31.92 MB
1000dpi	16 bit	48-bit	60 x 70	37.21 MB
1000dpi	16 bit	48-bit	60 x 90	47.89 MB
1000dpi	16 bit	48-bit	60 x 120	63.85 MB

* for TIFF = uncompressed format, higher resolution will create larger file sizes.

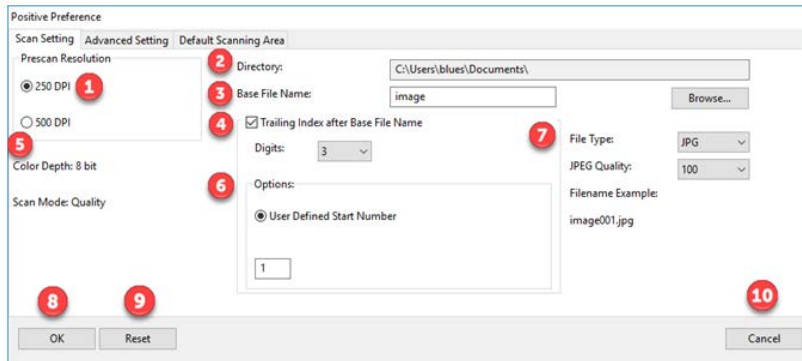


Scan Mode – Normal mode produces a scan in jpeg format while Quality produces a non-compressed, “loss-less” TIFF image.

NOTE: Make sure there is enough space available on the computer when changing the Scanning Resolution. A high scanning resolution results in large files that may prove difficult to save.

HOW TO SCAN.....continued

STEP 5 – Scan Setting Reference



- 1** **Prescan Resolution:** use this when prescanning only, the 500 dpi setting produces a larger prescan view when in full screen mode
- 2** **Directory:** Select where the files are saved to, Documents is the default setting, to change select Browse and choose a different location
- 3** **Base File Name:** This is the file name applied to every image which will then have a number after it, image is the default
- 4** **Trailing Index after Base File Name:** This is the number length, digits 3 default file name example image001, you can select 1-6 digits for the number length
- 5** **Color Depth:** These can be configured in the Active Frame settings window 8 bit is 8 bits per RGB channel = 24 bit color mode, 16 bit is 16 bits per color channel = 48 bit color mode **Scan Mode:** Normal for standard photographic images, Quality for high definition images such as x-rays, Quality mode results in a slower scan speed
- 6** **Options: User Defined Start Number:** Allows for more custom numbering of the files
- 7** **File Type: TIF;** Full uncompressed image, **JPG;** uses JPG compression to reduce the file output size JPG only supports 8 bit image output
- 8** **OK:** Saves the settings applied and closes this window
- 9** **Reset:** Resets the software to ALL Factory Defaults
- 10** **Cancel:** Closes this window and no settings will be saved

HOW TO SCAN.....continued

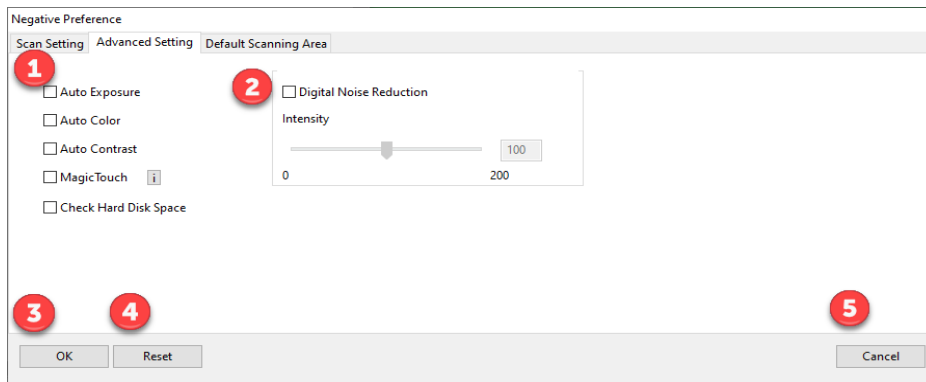
Set Scan Preferences (Continued...)

4. Options - Use Film Index: Use the number assigned to the slide based on it's position in the cartridge.

User Defined Start Number: Enter a specific start number

5. Choose the file type , "TIF" or "JPG". (TIF uncompressed or JPG Compressed- Choose image quality for JPEG. (20-100) 100 offers the least amount of compression

Advanced Settings Reference



- 1 Auto Exposure:** Automatically adjusts the image exposure, on by default
- Auto Color:** Corrects image colors when activated
- Auto Contrast:** Adjusts image contrast when enabled
- Magic Touch:** Removes dust and scratches when enabled

2 Digital Noise Reduction: This reduces digital film grain on higher speed films, do not use on 100 aa or slower as it will cause image degradation

3 OK: Saves settings and returns to main interface

4 Reset: Restores factory defaults on ALL Settings

5 Cancel: Closes settings and returns to main interface without saving changes

HOW TO SCAN.....continued

Set Scan Preferences (Continued...)

Default Scan Area Reference

The screenshot shows a dialog box titled "Positive Preference" with three tabs: "Scan Setting", "Advanced Setting", and "Default Scanning Area". The "Default Scanning Area" tab is active. A red circle with the number "1" points to the checkbox "Enable user setting for auto-crop". Below this, there are two rows of settings. The first row is "Scan Size", with "Width" set to 3.649980 and "Height" set to 2.429764, and a "Default" button. The second row is "Scan Offset", with "Offset X" set to 0.000000 and "Offset Y" set to 0.000000, and a "Default" button. At the bottom of the dialog, there are three buttons: "OK" (with a red circle "2"), "Reset" (with a red circle "3"), and "Cancel" (with a red circle "4").

1 Enable user setting for auto-crop: This allows you to configure a smaller than standard 35mm scan area so it applies the same to every scan, this can be useful when scanning 110 slides, it cannot be set outside the 36.5 x 24.5 maximum scanning area, so there is no ability to capture the film sprocket area outside these dimensions

2 OK: Returns you back to the main software interface and saves your settings

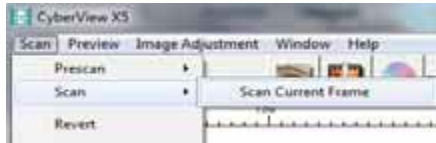
3 Reset: Restores ALL settings back to factory defaults

4 Cancel: Returns you back to the main software interface without saving your settings

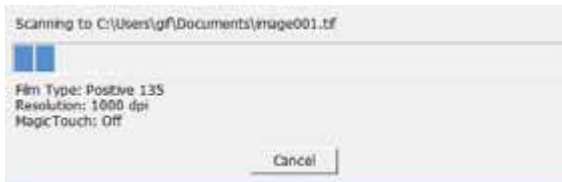
HOW TO SCAN.....continued

STEP 6 – Scan

Scan - Scan- Scan Current Frame



This begins the scan to file process



All scanned images will be saved to the directory location set previously, the factory default locations are:

Windows: C:\Users\[YOUR NAME]\Documents;

MAC: Mac HD\Users\[YOUR NAME]\Pictures\CyberView Images),

STEP 7 – Exit

Select "Scan > Exit" to close the driver. Scanned image files can be open/edited with any image editing software.

USER INTERFACE

The screenshot displays the CyberViewX5-Super Edition software interface. The main window features a menu bar (Scan, Preview, Image Adjustment, Window, Help) and a toolbar with various icons. The central area is the **Main Preview area**, which is currently empty. To the left is the **Prescan viewing panel**, which contains a vertical list of icons. To the right is the **Active Frame Setting** panel, which includes controls for Scan Mode (Normal), Scan (1000 DPI), Width (1.44), Height (-1.#J), and Color Depth (8 bit). Below these are buttons for 'Apply to All' and 'Advanced >'. The **Information** section shows the file path 'C:\Users\blues\Documents\' and an 'Open File Location' button. The status bar at the bottom displays 'R:0 G:0 B:0', 'X:0 Y:0', 'Exposu Zoom Scale:100%', 'Location:1', and 'Selections:0'. Red arrows point from text annotations to the corresponding UI elements.

Main Preview area

Prescan viewing panel
Images only appear here in
Prescan mode

Frame settings
Set DPI
Color depth
View image
measurements

Active Frame Setting

Scan
Scan Mode: Normal
1000 DPI
Width: 1.44
Height: -1.#J
Color Depth: 8 bit

Apply to All
Advanced >

Information
C:\Users\blues\Documents\
Open File Location

Left : 0
Top : -2147483648
Width : 1.44 inch
Height : -1.#J inch
Size : -1.#J MB

R:0 G:0 B:0 | X:0 Y:0 | Exposu Zoom Scale:100% | Location:1 | Selections:0

There are four major parts of the CyberView X 5 user interface:

I. Main Window Area [Fixed Windows]

II. Preview Window Area [Fixed Window]

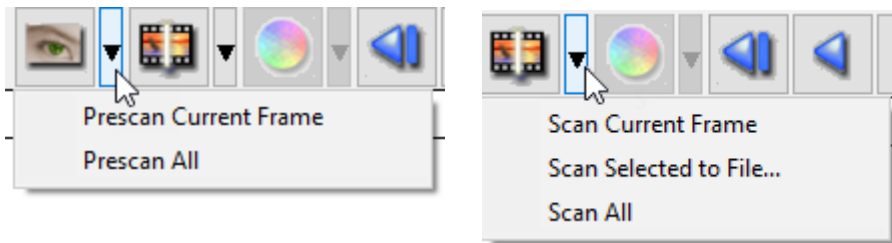
III. Active Frame Setting Area [Floating Window]

I. Main Window Area [Fixed Windows]

Menu Commands - Scan

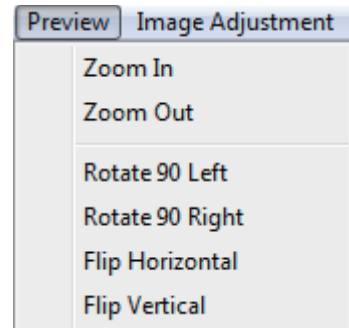
Prescan - Prescan Current Frame: Pre-scan the existing slide.

Scan - Scan Current Frame - Scan Selected to File - Scan All



Menu Commands - **Preview** (*overview*)

Zoom, Rotate & Flip features.



Preference - See Scan Setting (See Page 13)

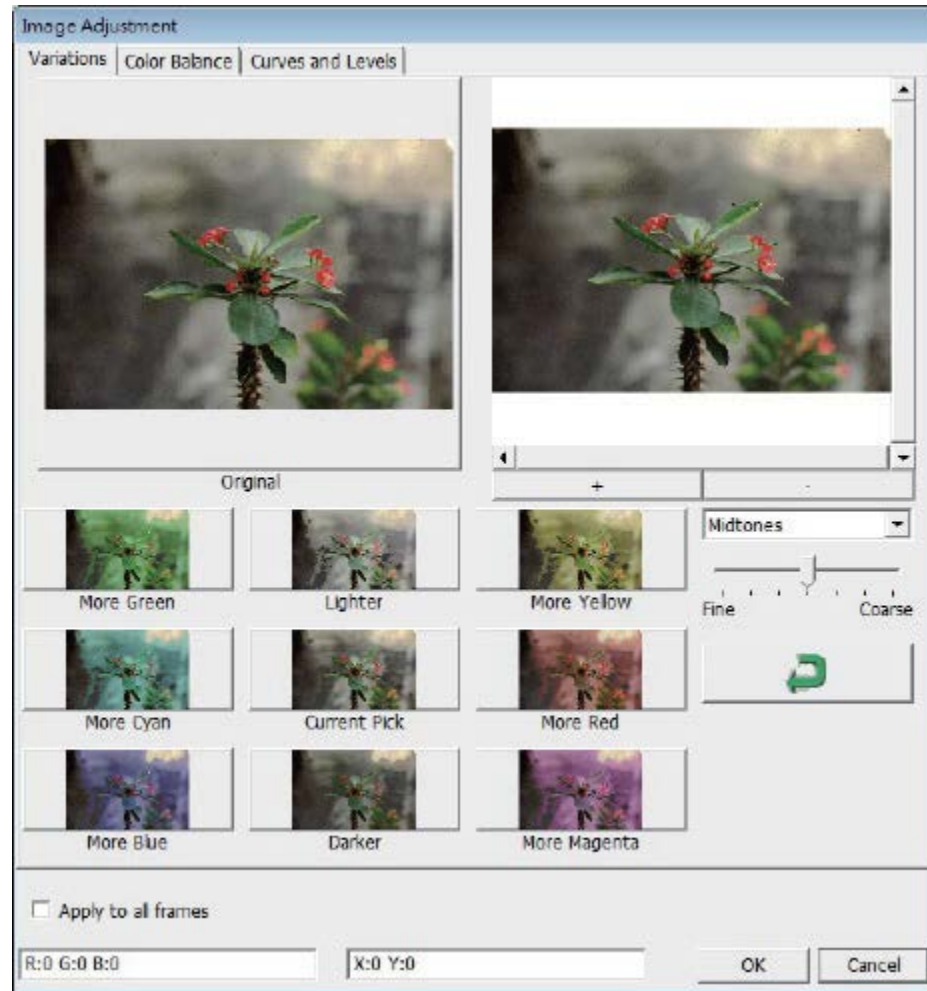
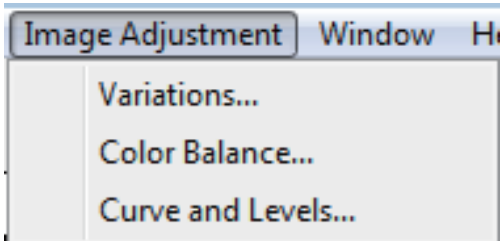
Exit

Closes the CyberView X5 user interface.

Menu Commands - Image Adjustment

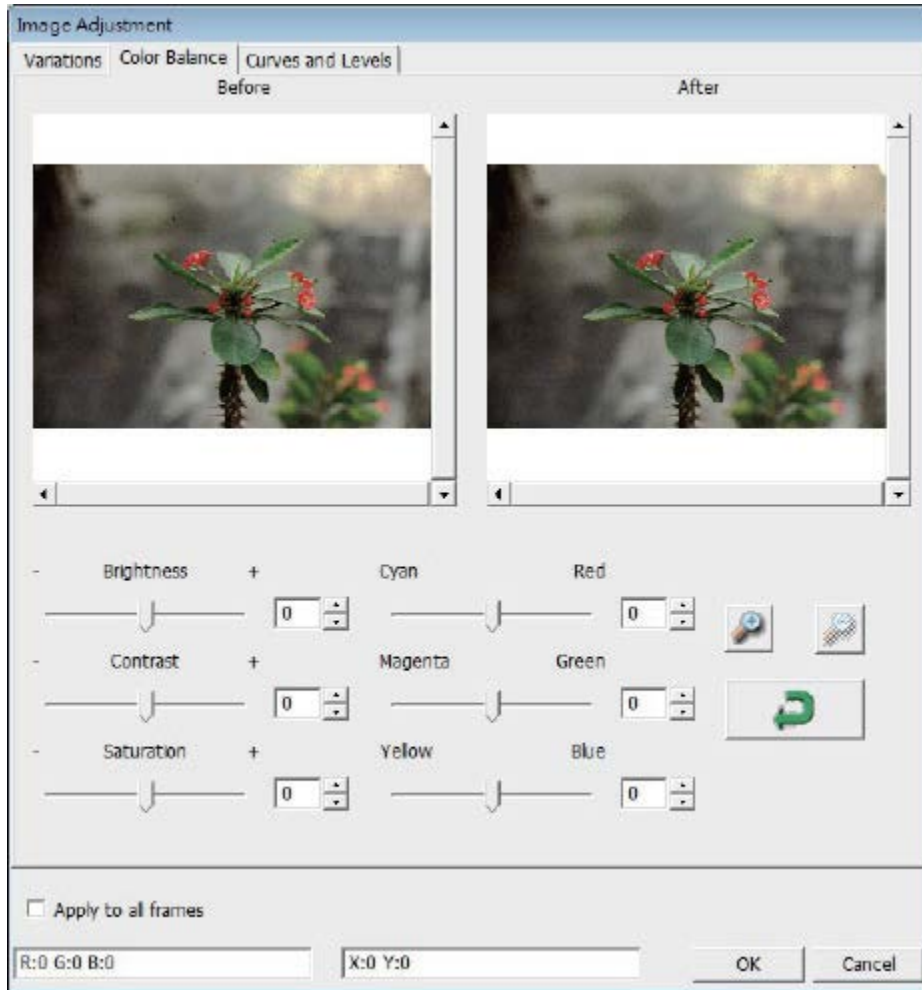
a. Image Adjustment

1. Variations: Generates different views of image with options to make changes to highlights, mid-tones, etc.



2. Color Balance

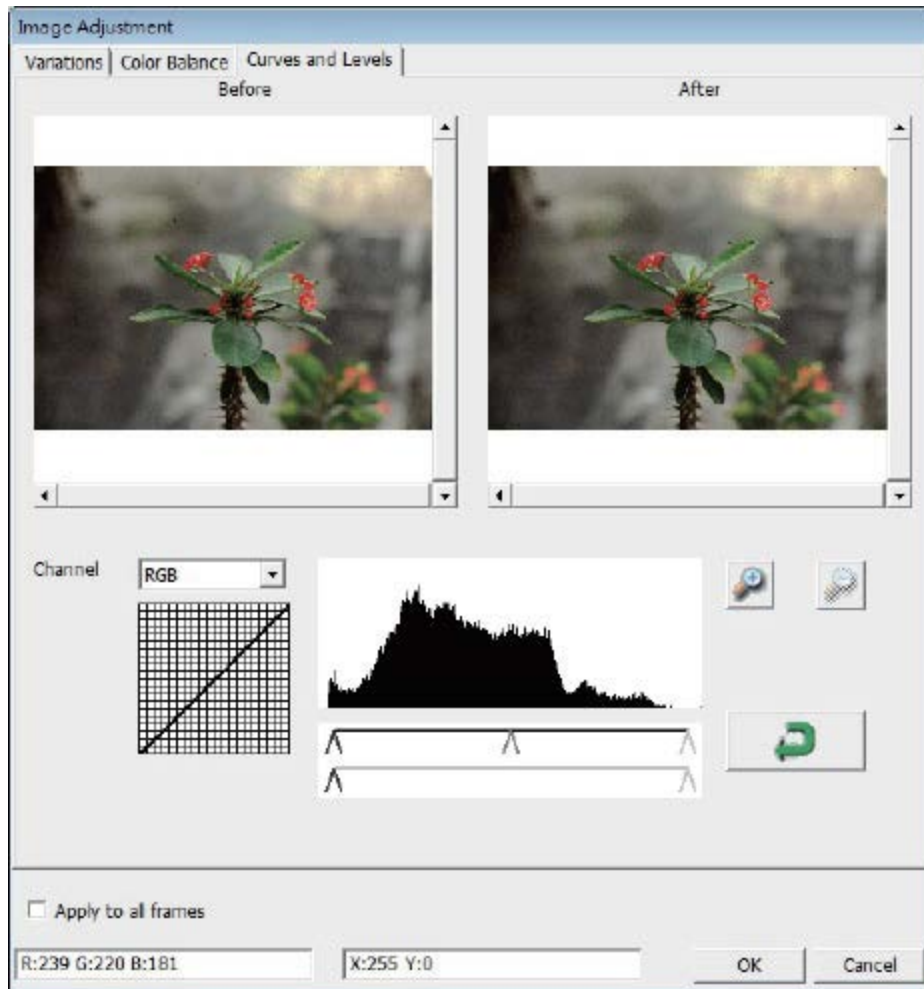
To adjust the brightness, contrast, saturation, and color (CMY or RGB) of the image. Comparisons between before and after adjusted images are shown for reference



Example: If a previewed image appears too dark, use the "Brightness" slider in the "Color Balance" window to adjust the image by selecting the slider in the center and moving it to the right. The image's "After" view becomes lighter. Select "OK" to accept the changes which will be sent to the scanning hardware. This can also be used to adjust each of the functions in "Color Balance" by contrast, saturation and specific color ranges of cyan, magenta and yellow.

3. Curves and Levels

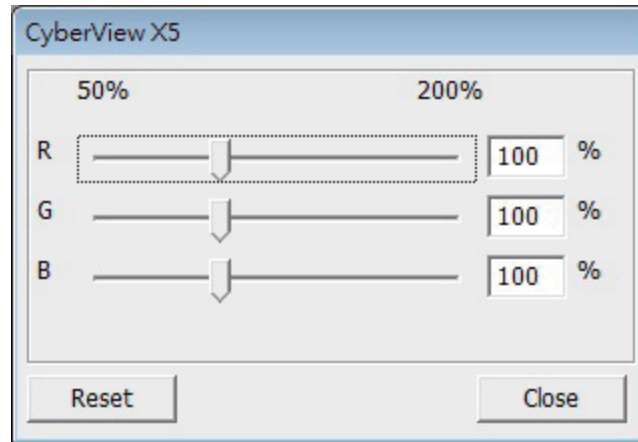
Adjust image settings by moving Curve and Levels settings. Comparison between before and after adjustment is displayed for reference.



Example: When the previewed image appears to be too dark, adjustments with the Input slider in the Curves and Levels window can be made to correct the image. Selecting the Gray slider in the center and moving it to the left will result in changes in the "After" view resulting in a lighter image. Once the adjusted image is acceptable select "OK" to send changes to the scanning hardware. The same method can also be used to adjust each color channel independently, using the channel drop down menu "RGB = All colors" R = Red, G = Green, and B = Blue.

Menu Commands - Windows

1. Exposure Setting: To adjust the exposure time (R, G, B) press "Reset" to restore to the default setting.



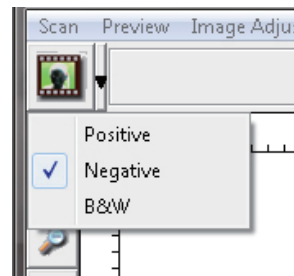
Menu Commands - Help

- **Update: Firmware:** Upgrade the firmware version, select the path where the file of firmware has been saved. (These files may be downloaded from our website)
- **About:** Displays system information (including operation system, CPU), product information (including product name, model name, hardware version, firmware version, software version, device information including interface and optical resolution).

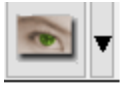
Function Bar Diagram

Please select your film type and brand from the toolbar:

- Negative
- Positive (also known as Slide)
- Black and White



II. Preview Window Area [Fixed Windows]



Prescan: Pre-scans the current film, or press drop down for more options.



Scan: Scan film, begins the scan process or press drop down button for more options



Image Adjustment: Accesses the image adjustment area after a Prescan has been performed
Press drop down button for more options.



Left Return arrow: Ejects the film to the left



Left arrow: Reverses the film one frame to the left



Right arrow: Advances the film one frame to the right



Right return arrow: Ejects the film to the right



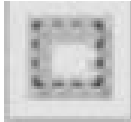
Go To:... You can select which frame to move to in the strip



Preference : Accesses the scan settings area

CyberView X Left Tool bar diagram

These tools become available when an image is prescanned first



Crop Tool: Select scan area: more than one selection can be made at a time.



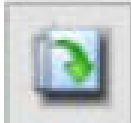
Zoom In: To magnify the image where the cursor is currently located. The image will be magnified with every click until the maximum multiple (1000%) is reached.



Zoom Out: To reduce the size of the viewed image click the Zoom Out cursor to the desired area, the image will reduce by half with every click until the lowest multiple (25%) is reached.



Rotate 90 Left: To rotate the image counter clockwise 90 degrees.



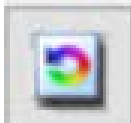
Rotate 90 Right: To rotate the image clockwise 90 degrees.



Flip Horizontal: To Flip the image 180 degrees horizontally.

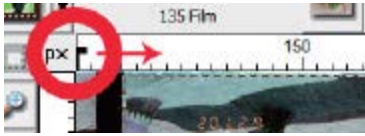


Flip Vertical: To Flip the image 180 degrees vertically.



Revert: Discard all modifications and restores the image back to the original state in preview windows.

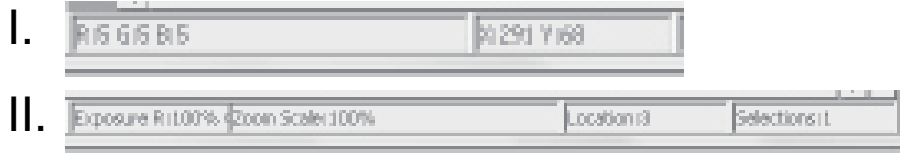
II. Preview Window Area [Fixed Windows] *(Continued...)*



You can select the ruler measurement unit “in”-“cm”-“px” by clicking the upper left corner.

Status Line

In the lower left hand corner, the color level (RGB: red, green, blue) and coordinates of the location [ex: I] are displayed. The zoom scale, the current frame location and how many areas selected to scan (if you see Selections 2 or higher indicates: Multiple scan areas on one slide [ex: II]).

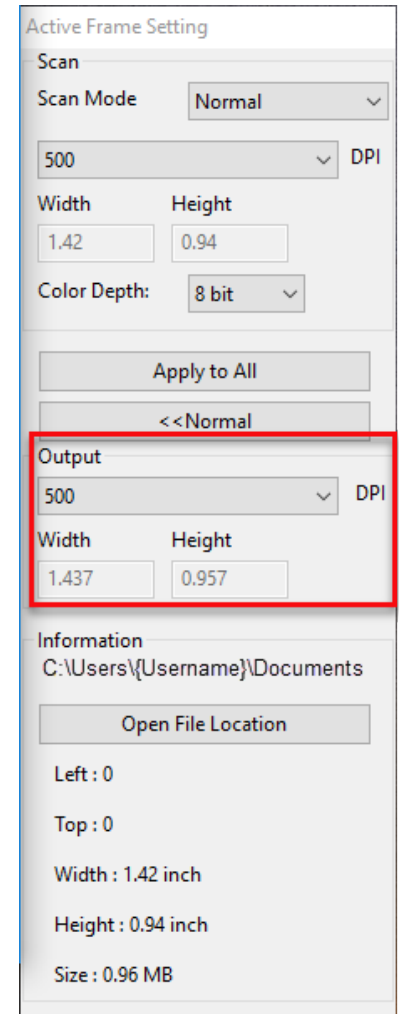
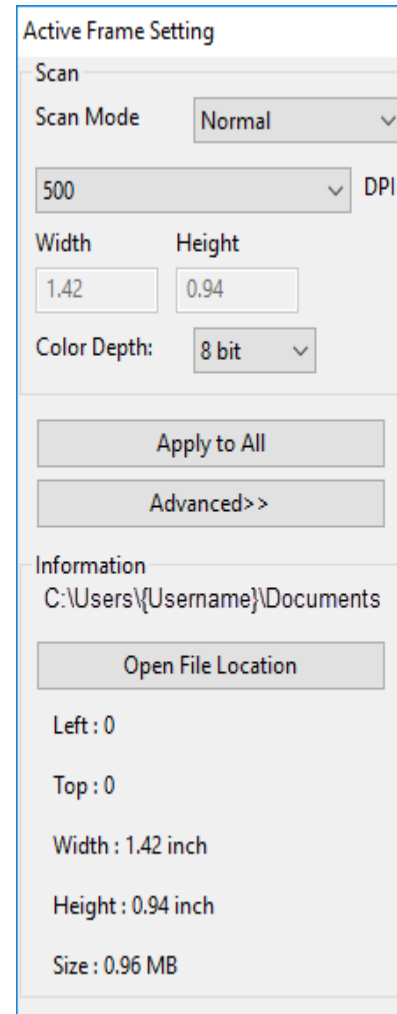


III. Scan Setting Area [Floating Windows]

Normal mode: [ex: I] to input the basic parameter to scan (including scan resolution, film size, color depth).

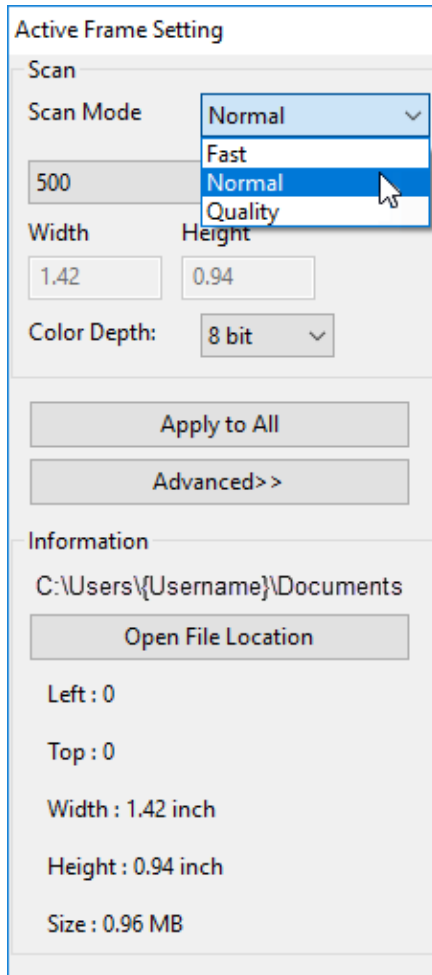
Advanced mode: [ex: II] Allows you to input the parameter of scan **output**, scan resolution

Apply to All : Applies settings made in this window only to all frames

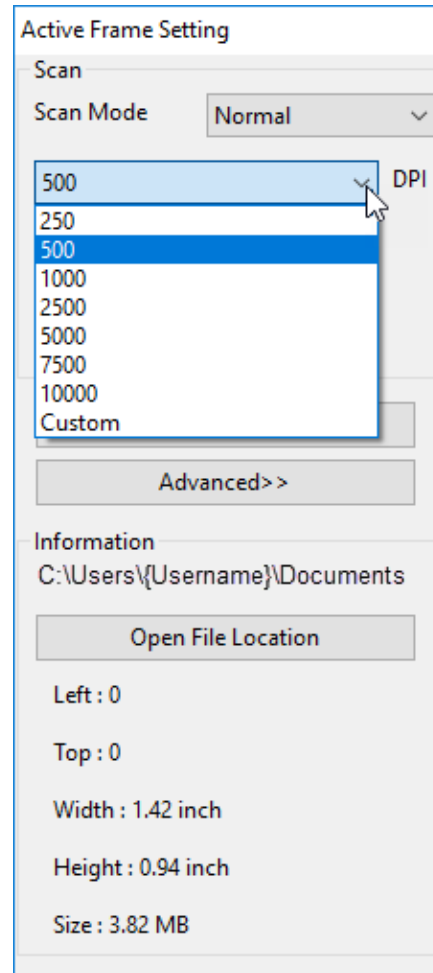


III. Scan Setting Area [Floating Windows] **Normal** (continued...)

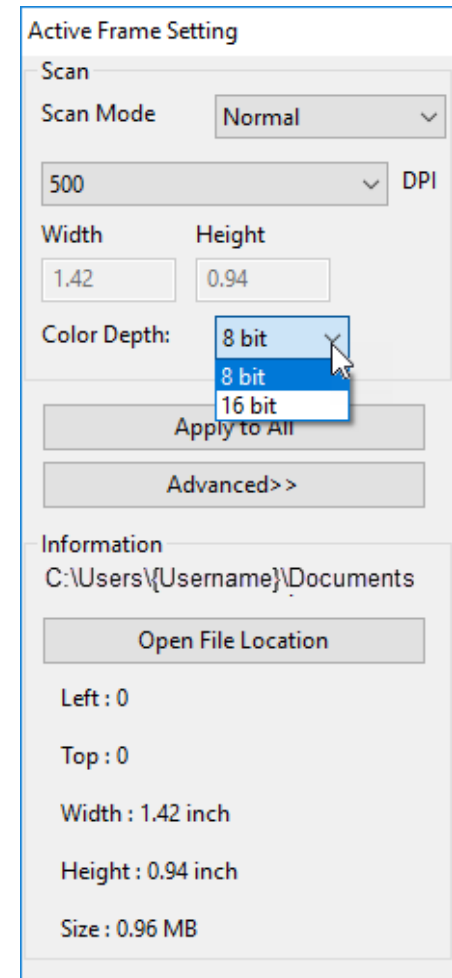
Scan Mode Normal: Scans using normal speeds, **Fast:** Scans 30% faster, **Quality:** Scans slower for more detailed images such as optical and dental x-rays



DPI: Set your scanning resolution



Color Depth: 8 or 16 bits per color Channel, resulting in a 24 or 48 bit image



TECHNICAL SUPPORT

CyberView

For more information on our film scanners, please visit [Pacific Image Electronics](#)

For Support and driver updates

[Driver and Firmware updates](#)

[Contact Us](#)